

**IMPORTANT:**  
 Go to [www.extron.com](http://www.extron.com) for the complete user guide, installation instructions, and specifications.

## AXI 02 AT • Setup Guide

This guide provides basic instructions for an experienced technician to install the AXI 02 AT Dante Audio Interface. The Extron AXI 02 AT is a compact audio interface that receives two channels from a Dante® audio network, providing connectivity to devices without a Dante interface. It features two line level analog outputs on captive screw connectors with a mirrored two-channel S/PDIF output on a coaxial RCA connector. Device configuration is performed using Extron DSP Configurator Software. Full Dante configuration is available using Dante Controller. For additional information, specifications, and the user guide, see the AXI 02 AT product page at [www.extron.com](http://www.extron.com).

### Disconnect Power and Mount the AXI 02 AT

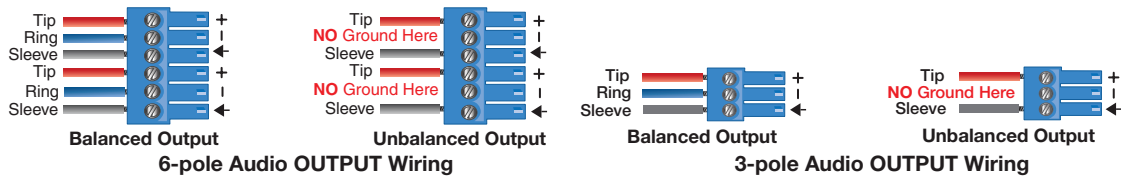
Disconnect power from the AXI 02 AT and turn off all devices that will be connected to it. The AXI 02 AT is housed in an eighth-rack width, 4.42-inch (133 mm) deep, 1U-high enclosure that can be mounted on a rack shelf, secured with the included ZipClip 100™ mounting clip, or secured to rack rails with tie wraps. Select a suitable mounting location, then choose an appropriate mounting option.

### Rear Panel Connections



**Figure 1. AXI 02 AT Rear Panel Connections**

**A Analog Audio Outputs** — Use 6-pole, 3.5 mm captive screw connectors to connect two balanced or unbalanced mono line level devices. Balanced or unbalanced stereo devices can also be connected using 3-pole or 6-pole captive screw connectors.



**Figure 2. Audio Output Wiring**

**ATTENTION :**

- For **unbalanced** audio outputs, connect the sleeves to the ground contact. **DO NOT** connect the sleeves to the negative (-) contacts.
- Pour l'audio asymétrique, connectez les manchons au contact au sol. **NE PAS** connecter les manchons aux contacts négatifs (-).

**NOTES:**

- Balanced or unbalanced stereo sources can be connected with 6-pole connectors.
- When using a 5-pole CSR adapter, connect it so the far left plug is inserted into the far left jack of the 6-pole output.

**B S/PDIF Audio Output** — Two S/PDIF output channels mirror the analog outputs on a coaxial RCA connector. Attenuation applied to the analog outputs does not affect the S/PDIF output.

## Front Panel Features

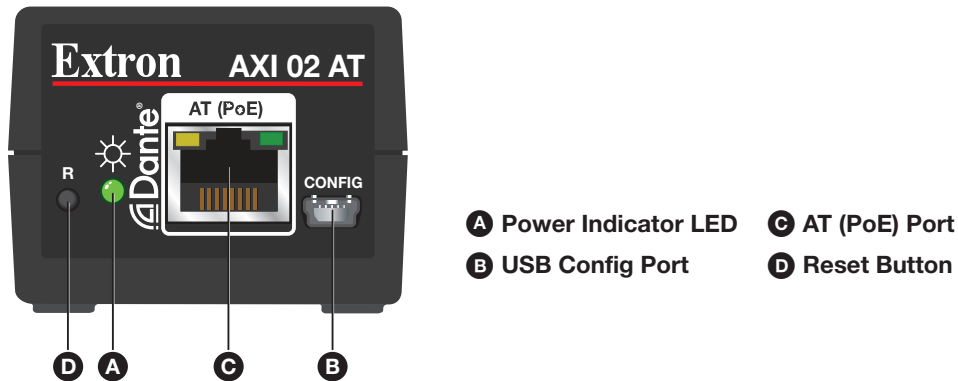


Figure 3. AXI 02 AT Front Panel Features

- A Power Indicator LED** — This green LED blinks during boot up and lights steadily when the AXI 02 AT is powered and fully operational. This LED also blinks amber for 10 seconds when the device receives a Dante identification signal (see the *AXI 02 AT User Guide* for more information on identifying physical Dante devices).
- B USB Config Port** — Connect a computer to this USB Mini-B port for device configuration and firmware updates.
- C AT (PoE) Port** — This RJ-45 port is used to connect the AXI 02 AT to a Dante network. The AT (PoE) port supports digital audio transport (AT), communication with the Dante network, communication with DSP Configurator for device configuration, and power over Ethernet (PoE).

### ATTENTION:

- Power over Ethernet (PoE) is intended for indoor use only. It is to be connected only to networks or circuits that are not routed to the outside plant or building.
- L'alimentation via Ethernet (PoE) est destinée à une utilisation en intérieur uniquement. Elle doit être connectée seulement à des réseaux ou des circuits qui ne sont pas routés au réseau ou au bâtiment extérieur.

- D Reset Button** — Using a stylus or small screwdriver, press and release this button to reset the unit to different tiers of factory defaults, including Dante settings such as device name, IP address, channel names, and audio format (see the *AXI 02 AT User Guide* for more information regarding resets).

## DSP Configurator Software Installation

The AXI 02 AT can be configured with Extron DSP Configurator Software using the USB port or AT (PoE) port. Install DSP Configurator on a PC running Microsoft® Windows®. For full computer requirements, see the DSP Configurator product page at [www.extron.com](http://www.extron.com).

### Downloading DSP Configurator from the Extron Website

1. From the Extron homepage ([www.extron.com](http://www.extron.com)), click the **Download** tab to open the Download page.
2. Under Software, on the left side of the page, select **DSP Configurator Software**. The DSP Configurator Software product page opens.
3. Click the **Download** button and follow the on-screen instructions.

**NOTE:** An Extron Insider account is required to download DSP Configurator.

## AXI 02 AT Configuration

### Renaming the AXI 02 AT

The AXI 02 AT default device name consists of the device model and the last six characters of the device MAC address. When multiple devices are on the network with default device names, identifying a specific device is difficult. To avoid confusion when multiple devices are on a network, Extron strongly recommends renaming each device with a unique and meaningful identifier.

**NOTE:** Dante Devices can also be renamed using Dante Controller (see the *AXI 02 AT User Guide* for more information).

To name the Dante device:

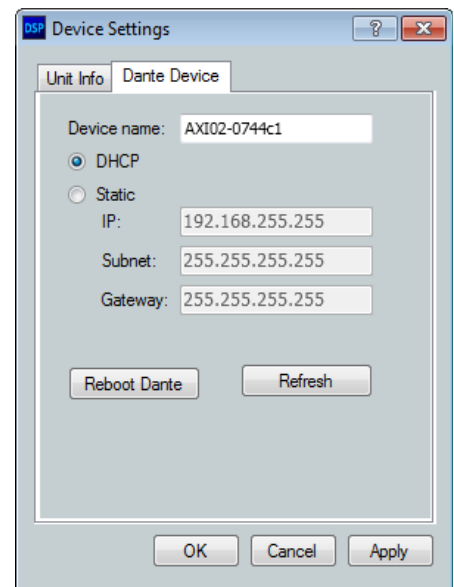
1. Open DSP Configurator and select **Connect . . .** from the splash screen drop-down and click **OK**.
2. Select the **USB** or **Dante** tab from the Connect to device . . . dialog, depending on the chosen connection method.
3. Select the AXI 02 AT being configured from the list of available devices and click **OK**.

**NOTE:** If connecting through the Dante tab, the AXI 02 AT default device name needs to be known. The AXI 02 AT default device name consists of the device model and the last six characters of the device MAC address. The MAC address is located on the white label on the side of the device (see the image to the right for one example of a default device name).

4. Select **Tools>Device Settings**. The Device Settings dialog box opens to the Unit Info tab.
5. Select the **Dante Device** tab at the top of the dialog box.
6. Enter a unique and meaningful name for the AXI in the **Device Name** field. For example, in the [image](#) on page 5, the AXI 02 AT has been renamed to AXI02-Breakout 1 to indicate it is located in breakout room #1.

**NOTES:**

- Device names cannot be longer than 31 characters, cannot begin or end with dashes (-), and cannot contain + ~ , @ = { } [ ] < > “ ; : \ | ‘ ? ! # \$ % \_ ` . / ^ or spaces.
- The name applied in the **Device Name** field is applied to the Dante device and is the name that appears in Dante Controller.



7. Click **Apply**.
8. AXI network configuration details can be viewed below the device name in the Dante Device tab.
9. Click **OK** to close the Device Settings dialog box.

### Additional Configuration

Additional configuration, such as renaming channels and adjusting output attenuation, can be performed with DSP Configurator. Refer to the *AXI 02 AT User Guide* for information regarding additional configuration with the DSP Configurator Software.

To route audio across the Dante network and complete other Dante-specific configurations, use Dante Controller (see [Downloading and Installing Dante Controller software](#) on the next page).

## Downloading and Installing Dante Controller Software

Dante Controller from Audinate is required to route audio across the Dante network and for limited configuration of the device. Install Dante Controller on a PC running Microsoft Windows 7 or newer. For full details regarding computer requirements, see the Dante Controller product page at [www.extron.com](http://www.extron.com).

1. From the Extron homepage ([www.extron.com](http://www.extron.com)), click the **Download** tab to open the Download page.
2. Under Software, on the left side of the page, select **Dante Controller**. The Dante Controller product page opens.
3. Click the **Download** button and follow the on-screen instructions to complete the Dante Controller installation process.

**NOTE:** An Extron Insider account is required to download Dante Controller.

## Creating a Physical Dante Network

A physical network is required to share Dante audio channels among Dante-enabled devices like the AXI 02 AT. Other devices capable of sending and receiving audio over a Dante network must be on the same physical network in order to communicate via Dante (see figure 4 below for an example of a physical Dante Network).

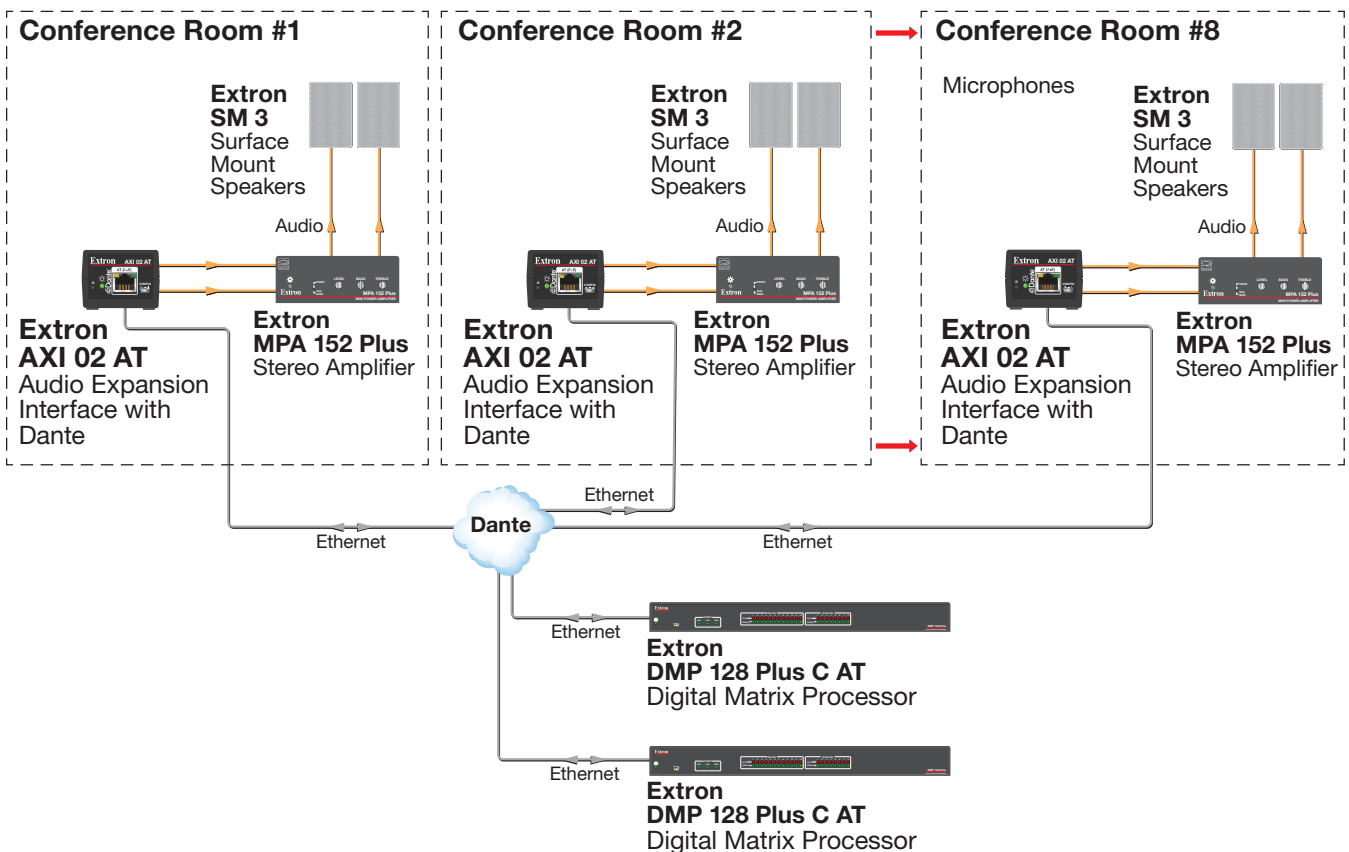


Figure 4. Physical Dante Network Diagram

## Dante Network Setup

Use a standard Ethernet cable to connect the AXI to a network via the RJ-45 AT (PoE) port (see [figure 3, B](#) on page 2) and power the device with a PoE-enabled switch or a power injector such as the Extron XTP PI 100. Launch the Dante Controller software.

Dante Controller auto-discovers all Dante devices on the network and advertises itself to allow Dante-enabled devices to communicate with it. The default device name is the model name followed by the last six characters of the device MAC address. Multiple devices on the same network can present difficulty in identifying inputs and outputs. To avoid confusion, rename each device to a unique and meaningful identifier.

**NOTE:** To simplify setup, connect only one Dante device to the network at a time, name the device, and then connect the next device.

## Dante Operation

### Dante Receivers

A Dante network is comprised of transmitters that output digital audio onto the Dante network and receivers that receive digital audio from the Dante network.

The AXI 02 AT analog outputs are listed as Dante receivers because they receive digital audio from the Dante network. Additionally, audio received by the analog outputs is mirrored over the S/PDIF output. The AXI 02 AT does not transmit signal onto the Dante network, and therefore does not have transmit channels.

**NOTE:** Refer to the *AXI 02 AT User Guide* for information regarding naming receiver channels.

### Network View Layout

Dante transmitters are listed horizontally across the top of the Network View window (see [1](#) in the figure below), while Dante receivers are listed vertically on the left side of the window ([2](#)). Creating a subscription in the connection matrix ([3](#)) routes audio from a Dante transmitter to a Dante receiver.

### Routing Transmitters and Receivers

1. Click the + box next to the device with the desired Dante transmitters (AXI44AT - ConfRm1 in the example to the right). The available transmitters display horizontally.
2. Click the + box next to the device with the desired Dante receivers (AXI02 - Breakout1 in the example to the right). The available receivers display vertically.
3. Click the junction of the desired channels in the connection matrix.

**Example:** AXI44 - ConfRm1 Mic/Line In 1 to AXI02A - Breakout1 Analog - S/PDIF Out 1.

A green check mark at the junction indicates the subscription is made. A check mark is also placed next to the receiver channel (if a green check mark does not appear, refer to the *Dante Controller* section of the *AXI 02 AT User Guide*).

**NOTE:** A transmitter can transmit signal to multiple receivers, but a receiver can only receive signal from one transmitter.

4. Click the junction again to remove the subscription and disconnect the transmitter from the receiver.

Additional transmitters and receivers can be connected or disconnected using steps 1 through 4 above (for additional information on Dante Controller operation, see the Dante Controller section of the *AXI 02 AT User Guide* at [www.extron.com](http://www.extron.com)).

