

EOS R50 V

TECHNICAL SPECIFICATIONS



Canon

EOS R50 V



Creative APS-C Mirrorless Camera

24.2MP APS-C SENSOR WITH INTERCHANGEABLE LENS MOUNT

Our trusted APS-C sized sensor paired with the DIGIC X processor delivers excellent sensitivity in low light for both photos and video. With the option to pair the camera body with our RF and RF-S lenses to take advantage of further creative possibilities.



MODERNIZED ERGONOMICS

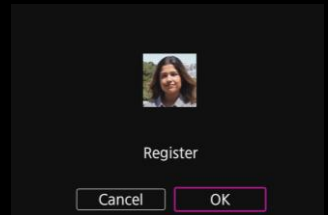
Social first features to get you sharing quicker. Vertical tripod mount and UI designed to cater modern creators who are prioritizing portrait content for platforms such as TikTok and Instagram.



ADVANCED MOVIE PERFORMANCE

Stand out with your content further with creative capabilities such as Slow & Fast mode, where you can easily capture emotion filled pieces through slowing down movements or speeding up all in camera.

Whereas register people priority mode allows you to track the stars of the show even in crowded areas such as events or sporting matches.



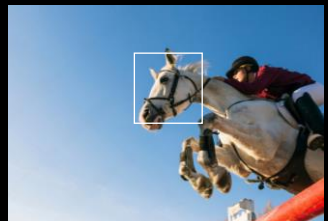
CANON LOG 3

Canon Log 3 offers users better dynamic range for highlight and shadow retention meaning more flexibility in post-production colour grading.



ADVANCED AUTOFOCUS

Track moving subjects with precision and ease. Dual CMOS AF II helps you lock onto subjects and tenaciously tracks them over a wide area. In addition to humans and pets the EOS R50 V can detect horses, airplanes and trains.



Canon

EOS R50 V

SPECIFICATIONS

EOS R50 V

Type	Lens mount		RF mount	
	Image processor		DIGIC X	
	Compatible lenses*1		RF/RF-S lenses (EF/EF-S lenses with EF-EOS R)	
Image sensor	Screen size		APS-C	
	Effective pixels (max. approx. megapixels)		2420	
Recording media	Supported cards		SDXC/SDHC/SD memory cards	
	UHS-II/UHS-I supported		Yes / Yes	
Still photo recording	Image quality	JPEG/HEIF	Yes / Yes	
		RAW / C-RAW / DPROAW	Yes / Yes / Yes	
	Maximum burst (Approx.)*2	Electronic 1st-curtain	JPEG Large	140
		Electronic shutter	RAW	59
		JPEG Large	95	
		RAW	36	
Movie recording	Digital tele-converter		2.0x / 4.0x	
	Format		XF-HEVC S / XF-AVC S	
	Recording format	HEVC	YCC422 10 bit / YCC420 10 bit	
		AVC	YCC422 10 bit / YCC420 8 bit	
	Movie recording size	Resolution		4K / 4K Crop / Full HD
		Frame rate (fps)		119.88 / 100.00 / 59.94 / 50.00 / 29.97 / 25.00 / 23.98
		Compression method		Standard Intra*3 / Standard LGOP
		Oversampling		4K movies from 6K oversampling*4
	High Frame Rate movies		-	
	Slow & Fast Motion movies		Yes	
	Cinema view		Yes	
	HDR movies		-	
	Time-lapse movies	4K / Full HD	Yes / Yes	
Smooth skin movie		Yes		
Audio format		LPCM / 24 bit / 4CH, ACC / 16 bit / 2CH		
Built-in microphone		Stereo		
Tally lamp / Recording emphasis		Yes / Yes		
Max. recording time per recording	Normal movies (59.94 fps or less)		2 hr.	
Picture Style		Yes		
Color filter		Yes		
Custom Picture (Movies)		Yes		
Image creation and image processing	Clarity		Yes	
	Auto Lighting Optimizer		Yes	
	Highlight tone priority		Yes	
	Long exposure noise reduction		Yes	
	High ISO speed noise reduction		Yes	
	Lens aberration correction			Yes
		Focus breathing correction (movies)		Yes

EOS R50 V

SPECIFICATIONS

EOS R50 V				
AF	Focusing brightness range (with an f/1.2 lens,* center AF point, One-Shot AF, at room temperature, and ISO 100)		Still photo	EV -5.0 to 20
			4K 30p	EV -2.5 to 20
	* Except RF lenses with a Defocus Smoothing (DS) coating		Full HD 30p	EV -3.0 to 20
	AF operation	One-Shot AF		Yes
		AI Focus AF		Yes
		Servo AF / Movie Servo AF		Yes / Yes
	Focusing area*5			mode 100 / mode 90 / mode 80 / mode 60
	No. of AF areas available for auto selection (max. zones)		Still photos / movies	651 / 527
	AF area (AF method)	Spot AF / 1-point AF		Yes
		Expand AF area (Above/below/left/right / Around)		Yes
Flexible Zone AF 1 / AF 2 / AF 3		Yes		
Whole area AF		Yes		
Subject to detect	Auto		Yes	
	People / Animals / Vehicles		Yes / Yes / Yes	
Eye detection	Auto		Yes	
	Right eye / Left eye		Yes	
Register people priority			Yes	
Screen	Screen size			3.0 inch
	Dot count (approx.)			1.04 million dots
	Screen brightness			7 levels
	Vari-angle			Yes
HDMI output	HDMI resolution			Auto / 1080p
	No. of metering sensor zones (still photos)			384 zones (24×16)
Exposure control	Metering brightness range (at room temperature, ISO 100)	Still photo		EV -2 to 20
		Movie		EV 0 to 20
	Detect priority AE while AF			Yes
	Anti-flicker shooting			Yes
	False color (movies)			Yes
	ISO speed (still photos)	Normal ISO speed		100 to 32000
		Expanded ISO speeds (max. ISO equivalent)		H: 51200
	ISO speed (movies)	Normal ISO speed		100 to 12800 (Custom Picture: Off)
		Expanded ISO speeds (max. ISO equivalent)		H: 16000 / 20000 / 25600 (Custom Picture: Off)
	AEB			–
Shutter	Shutter speed (still photos/sec.)	Electronic 1st-curtain		1/4000–30, bulb
		Electronic shutter		1/8000–30, bulb
	Shutter speed (movies/sec.)	Electronic shutter		1/4000–1/8
	Flash sync speed (sec.)	Electronic 1st-curtain		1/250
	Silent shutter function			Yes
HDR shooting	HDR shooting (PQ)	Still photos / movies		Yes / Yes
	HDR mode (still photos)			Yes
	HDR movies			–
Focus bracketing			Yes	
Image stabilization function			–	
Movie digital IS			Yes	
Drive	Continuous shooting speed (high-speed continuous shooting +, max. approx. shots/sec.)		Electronic 1st-curtain	12
			Electronic shutter	15
Interval timer			Yes	
Built-in flash			–	
External flash	Multi-function shoe	21-pin / 5-pin		Yes / –
	Digital terminal			USB Type-C
	HDMI output terminal			Type D
	External microphone input terminal			Yes
	Headphone terminal			Yes
	Remote control terminal			Yes (E3 terminal)
	Battery			LP-E17
Power source	USB power support		Charging / camera power supply	Yes / Yes
	AC power source			AC-E6N + DR-E18
	Number of available shots (approx., at AE 100%, with power saving, at 23°C/73°F)	Viewfinder		–
Screen		480		
Auto power off temperature			Yes	
Appearance and camera controls	Zoom lever			Yes
	Vertical tripod socket			Yes
Dimensions and weight	Dimensions (approx. width × height × depth)*6			119.3 × 73.7 × 45.2 mm / 4.70 × 2.90 × 1.78 in.
	Weight (approx. including battery and card)*6	Black		370 g / 13.05 oz.
White		373 g / 13.16 oz.		
VR lenses	Support for RF-S3.9mm F3.5 STM DUAL FISHEYE / L334			Yes / Yes
	Wi-Fi (wireless LAN)			Equivalent to IEEE 802.11b/g/n/a/ac
Communication functions	Bluetooth			Bluetooth Specification Version 5.1
	USB			Equivalent to USB 10 Gbps (SuperSpeed Plus USB / USB 3.2 Gen 2)
	streaming	USB (UVC/UAC) connection		Yes
		HDMI connection		Yes
		Camera Connect		Yes
Live Switcher Mobile		Yes		

Canon

**www.canon.com.au
www.canon.co.nz**